



BESUTO HOMES

Hooked on delivering beautiful homes

Presents
PARC 22



The property

Magnificent newly reformed single level home in one of Palma's premier locations.

4 bedrooms, 3 bathrooms, home office & leisure room, garage, outstanding outdoor courtyard, entertainment and sun terrace areas.

240 sqm built area, plus additional 155 sqm external area.



An eye for design

The property has been superbly reformed by developer Besuto Homes to provide a magnificent single level easy living home with incredible attention to detail, design and quality.

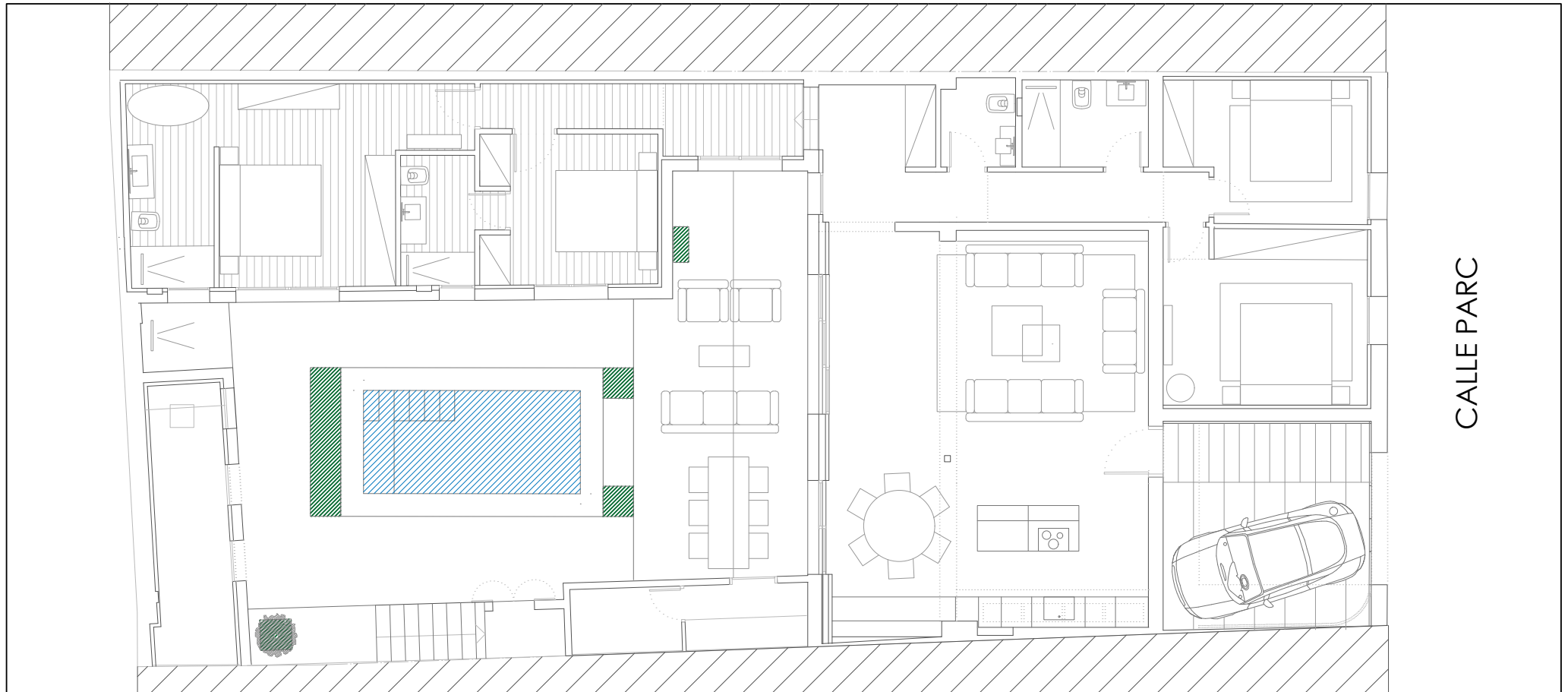


Floorplans

Built area: 240m²
External area: 155m²
Pool: 15m²

Features include:

4 Bedrooms - 3 Bathrooms with Huguet tiling - 1 guest WC - Sonos Sound System - Open plan Kitchen/Living room with heights of up to 3.7m - Air conditioning & underfloor heating throughout - Individual private office and gym/massage room - Timber floors to bedroom suites - Schuco Windows - High Quality Mortex Flooring - Independant Entertaining Kitchen Room

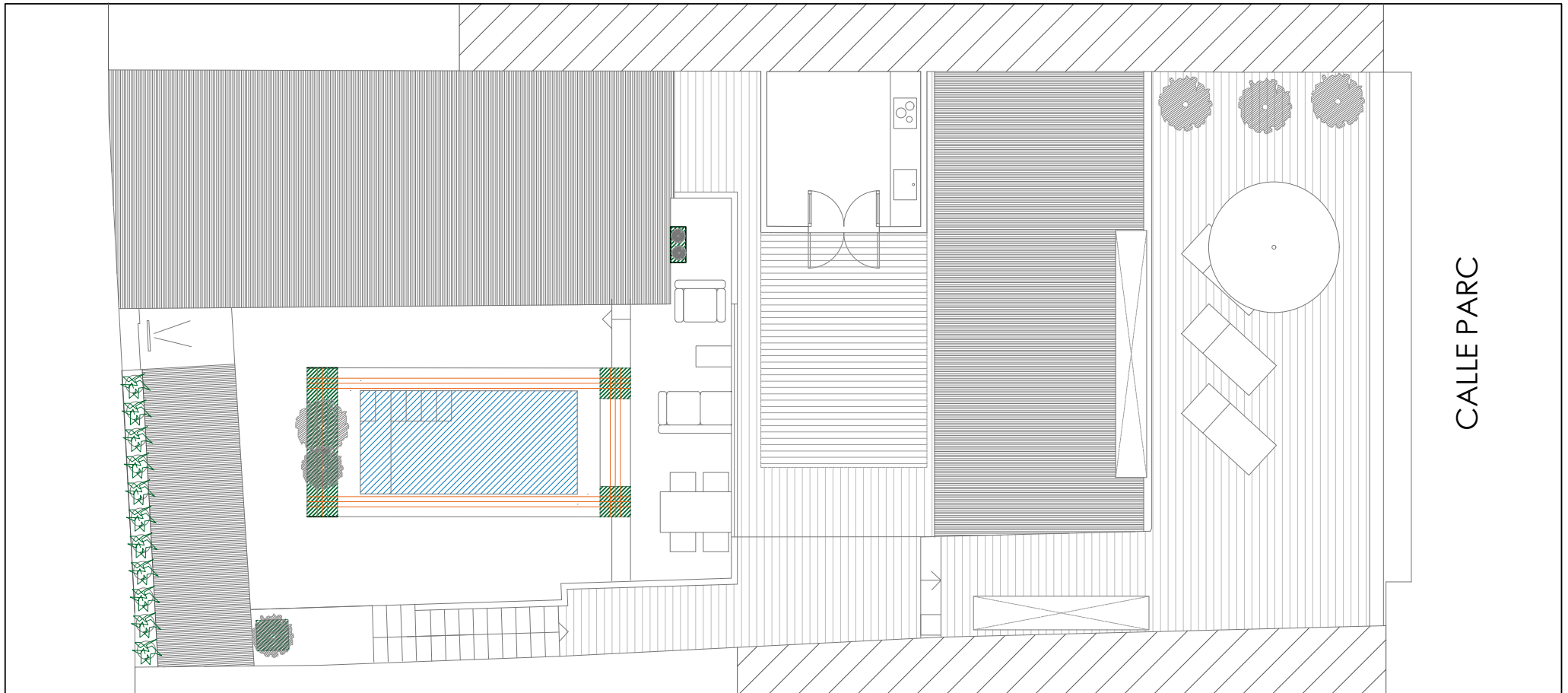


Floorplans

Built area: 240m²
External area: 155m²
Pool: 15m²

Features include:

Laundry area - Herb Garden - Home Automation system - Heated "Courtyard" pool -
Two External Showers - Underfloor heating across entire property - Private sun deck -
Garage - Garden designed by leading Swedish Landscape specialist Annika Zetterman





Contact

For full information and private viewings,
contact the developers:

+34 633 52 34 88

info@besutohomes.com

john@besutohomes.com

Disclaimer: computer generated images and render images used on this brochure are the artist's impression and are an indicative of the actual designs. The imagery used on the brochure may not represent actuals or may be indicative to style only.